

Introducing the all new;

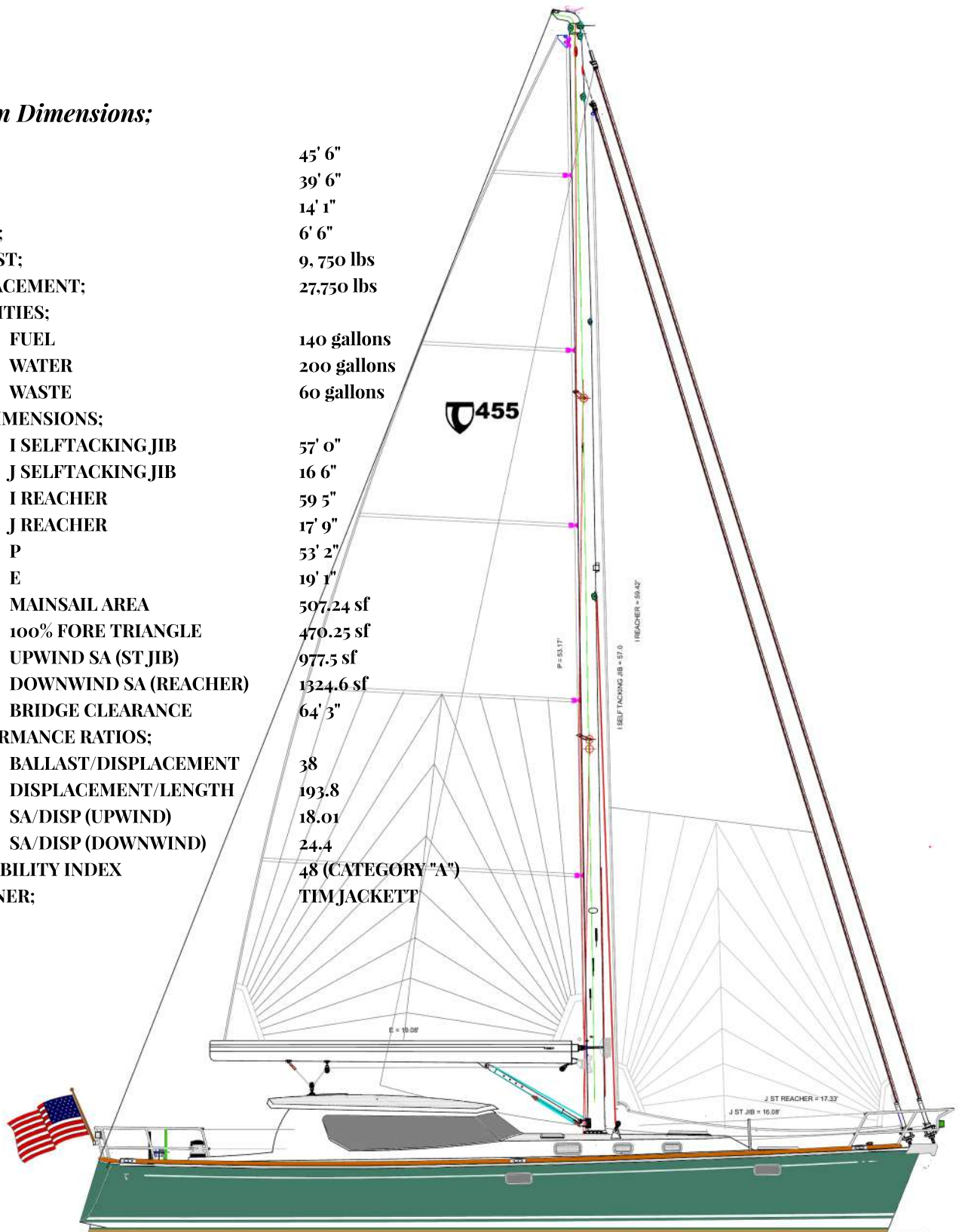
TARTAN 455

60th Anniversary



Design Dimensions;

LOA	45' 6"
LWL	39' 6"
BEAM	14' 1"
DRAFT;	6' 6"
BALLAST;	9,750 lbs
DISPLACEMENT;	27,750 lbs
CAPACITIES;	
FUEL	140 gallons
WATER	200 gallons
WASTE	60 gallons
SAIL DIMENSIONS;	
I SELFTACKING JIB	57' 0"
J SELFTACKING JIB	16' 6"
I REACHER	59' 5"
J REACHER	17' 9"
P	53' 2"
E	19' 1"
MAINSAIL AREA	507.24 sf
100% FORE TRIANGLE	470.25 sf
UPWIND SA (ST JIB)	977.5 sf
DOWNWIND SA (REACHER)	1324.6 sf
BRIDGE CLEARANCE	64' 3"
PERFORMANCE RATIOS;	
BALLAST/DISPLACEMENT	38
DISPLACEMENT/LENGTH	193.8
SA/DISP (UPWIND)	18.01
SA/DISP (DOWNWIND)	24.4
CE STABILITY INDEX	48 (CATEGORY "A")
DESIGNER;	TIM JACKETT





455

Design Comments

Tim Jackett, Tartan Chief Designer

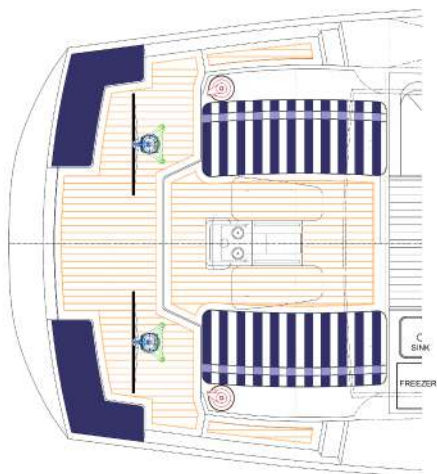
At Tartan Yachts, we have been conceptualizing several different sizes of deckhouse sloops. The defining features are; a large, twin-wheel working cockpit area, a crew/guest cockpit with easy access into a light and airy deckhouse, and a full inside steering station within the deckhouse. The first of the Tartan deckhouse models to launch is the Tartan 455.



The Cockpit

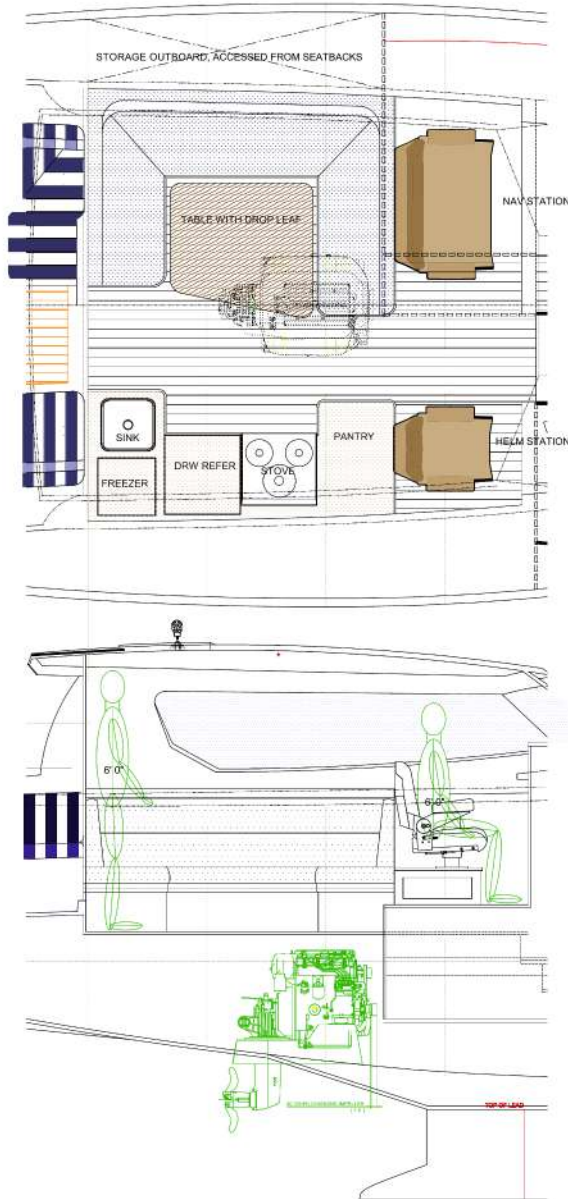
The 455 offers innovative performance cruising under sail or power. For wind and water in the face sailing, choose the aft cockpit, twin wheel helm position with convenient sail controls led to large cockpit mounted winches. The twin wheel arrangement also provides great centerline access to the large, hinge down swim platform.

The forward cockpit area is deep and well-protected for crew and guests and offers an easy 6-inch step down into the deckhouse.



The Deckhouse

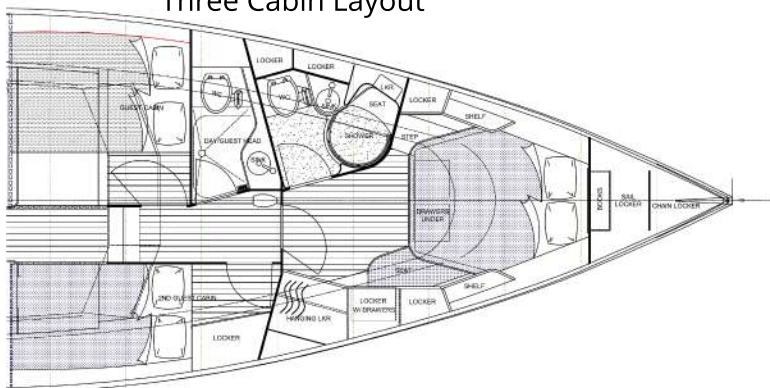
Inside the deckhouse the 360 degree expanse of windows provides exceptional light and visibility. Overhead light is provided by two sliding deck hatches over the helm to starboard and navigation area to port. Aft to port is a large U-shaped settee with drop-leaf table, and to starboard is a well appointed galley with drawer style refrigeration unit and countertop drop-in freezer. At the forward end of the deckhouse, a full inside steering station complete with a Llebroc ultraleather captain's chair, wheel, navigation instruments, and engine controls results in extremely comfortable inside piloting when the weather is too hot, too cold or just plain too nasty to want to hunker down in the aft cockpit. To port a Llebroc ultraleather, extra wide captain's chair with a work station/navigation station provides additional comfortable seating under way or dockside.



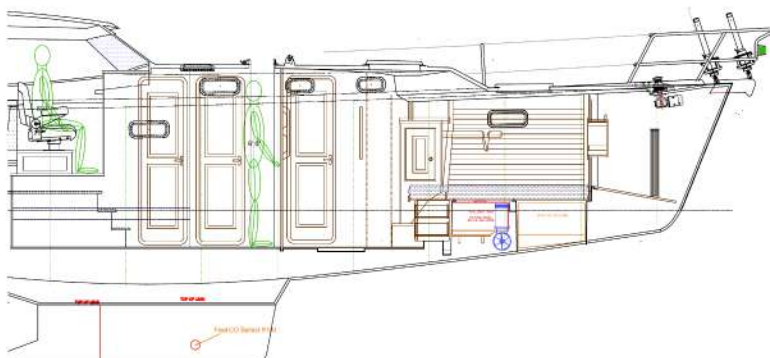
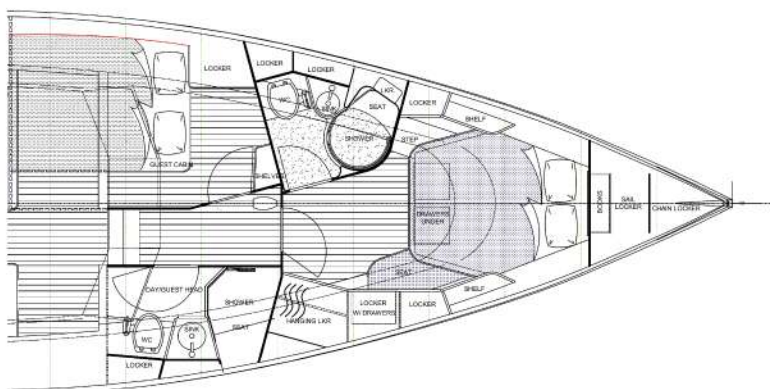
The Accomodations

The cabin interior living spaces are a short three steps down from the deckhouse. Available as a two or three cabin layout, both with two heads. The owner's cabin is forward with a large island queen-sized berth and private head with full stall shower and plenty of storage in Tartan's hallmark solid stock cabinetry. The 455 interior joinerwork is available in North American cherry or maple as standard, other interior woods are available as, POR. All cabins are well-ventilated by a large array of opening portlights and deck hatches. Additional light is provided by fixed hull portlights.

Three Cabin Layout



Two Cabin Layout



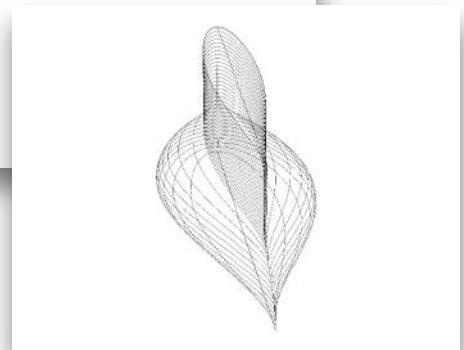
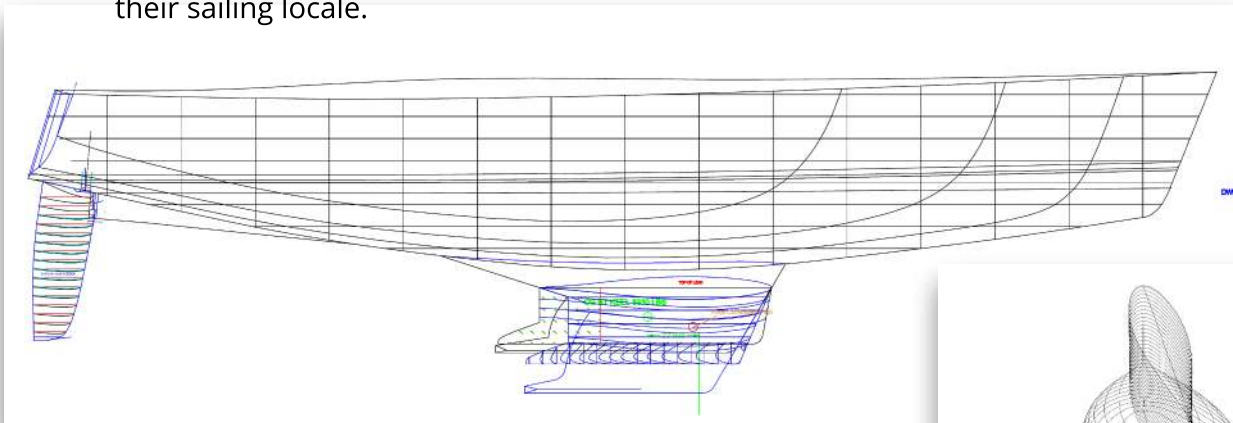
The Carbon Spar

The Tartan 455 sports a large, carbon-fiber, double spreader mast, built by sister company, AMP Spars with a self-tacking jib as the standard configuration. By adding a furling masthead light-air reacher, which creates Tartan's exclusive CCR sail plan, the 455 puts great sailing performance at your fingertips. With sail controls led aft to both cockpit helm positions, the sail tweaker in all of us will be satisfied.

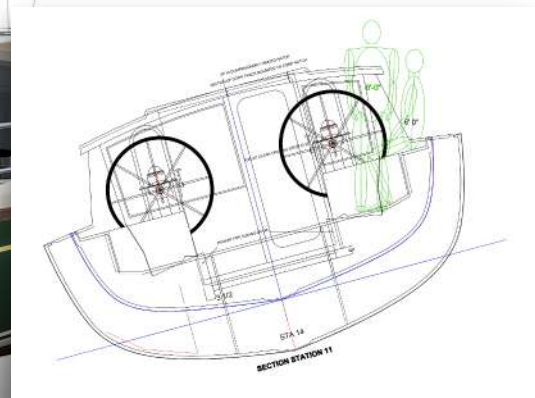


The Hull

Tartan 455's hull is a powerful modern design, that also respects traditional aesthetics. It does not cater to the fad of the day. Keel choices include a shallow fixed draft beavertail keel, keel/centerboard or deep fin, all solid lead castings to deliver superior performance and durability. The various keel configurations will meet each owner's requirement for their sailing locale.



The 455 steering pedestals are a work of art. Crafted in carbon fiber they are strong, elegant and lightweight. Coupled to an efficient rudder blade with a carbon fiber rudder post, steering is light yet positive.



The Deck

The deckhouse roof serves as the anchor point for the mainsheet traveler keeping the sheets safely out of the cockpit. It also includes a large recess in the exterior surface that can be fitted with either Lexan panels for a dramatic skylight or, for those looking for an aesthetically pleasing solar installation, the recesses are sized for flush-mounted solar panels. Wide side decks and plenty of handholds along the deckhouse, the lifelines, deck rails and extended bow and stern rails make movement on deck safe and secure. The 455 can be fit with Tartan's classic teak toe rails or for those who prefer less maintenance, anodized aluminum toe rails are available.



Now in its 60th year, innovation continues as one of the keys to Tartan's long-term success. Moving forward with our first deckhouse design Tartan will lead the way to more comfortable yet exhilarating performance cruising. The Tartan 455 will provide her owners' unparalleled comfort, top level pace, and breathtaking views while cruising; whether under sail, power or at the dock.



TARTAN

Proudly handcrafted in the USA for 60 years



605 South State Street * Painesville, Ohio 44077

440 392-2628 * info@tartanyachts.com

www.tartanyachts.com